







ENDURANCE
BY AETHER LIGHTING



VANDAL & WEATHER RESISTANT LIGHTING

-  URBAN REGENERATION
-  SOCIAL HOUSING
-  LOCAL AUTHORITY
-  TRANSPORT
-  SECURE ESTABLISHMENTS
-  RETRO-FIT REPLACEMENT LED GEAR TRAYS

Endurance - Aether Lighting's range of LED Vandal & Weather resistant light fittings designed using the combined experience of over 100 years in the vandal resistant market...

This century of knowledge has resulted in a British designed and manufactured range able to withstand extreme physical attack and severe weather conditions, coupled with an aesthetic flair and some of the highest IP & IK ratings available.

Suitable for interior & exterior installations, including anti-ligature options for secure establishments.

ENDURANCE - LIGHTING THAT LASTS!





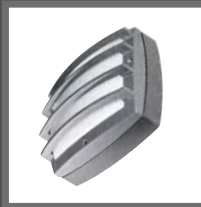
SQ
Page 4



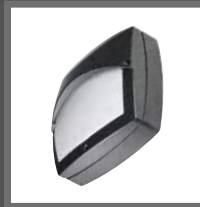
SQ45
Page 5



TAVOS
Page 6



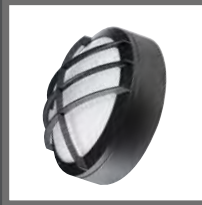
TAVOS 'A' GRILLE
Page 6



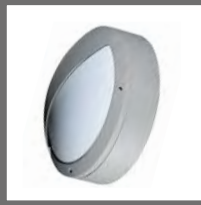
TAVOS HOOD
Page 6



COVELLO
Page 7



COVELLO 'A' GRILLE
Page 7



COVELLO HOOD
Page 7



KALIX
Page 8



KALIX ANTI LIGATURE
Page 8



ARCOLA
Page 9



ARCOLA ANTI LIGATURE
Page 9



FORUM
Page 10



FORUM45
Page 11



TABOR
Page 12



TABOR45
Page 13



TABOR COMPACT
Page 14



TABOR SQUARE
Page 15



VARBERG
Page 16



STEALTH
Page 17



CITADEL
Page 18



CITADEL45
Page 19



ARENA
Page 20



RETRO-FIT
Replacement LED Gear Trays
Page 21

MADE-2-SPEC - Brochure upon Request

SQ

Square LED bulkhead

PRODUCT CODE

LUMENS

LOAD

SQ/1420

1420

11.5W

SQ/1950

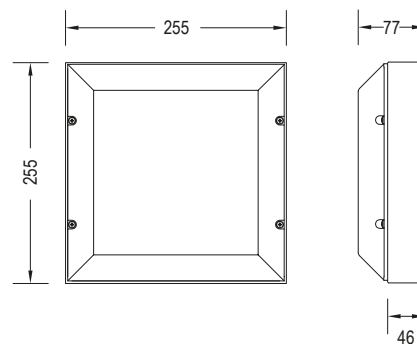
1950

17W

SQ/2200

2200

21W



Square bulkhead developed with LED at the forefront of its design, combining high performance, strength and durability.

Body in zinc coated steel.

3mm opal polycarbonate diffuser secured by anti-tamper fixings.

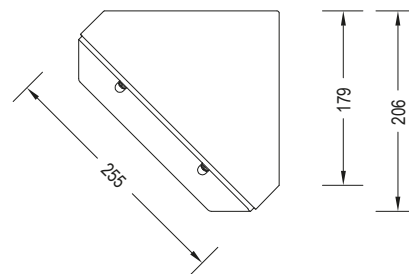
1420, 1950 and 2200lm are supplied set to ordered level but version for on-site switchable output is available - add suffix "ADJ".

CCT:	4000K
Finish:	Painted Textured Black
IP:	65
IK:	14

SQ45

Angled LED bulkhead

PRODUCT CODE	LUMENS	LOAD
SQ45/1420	1420	11.5W
SQ45/1950	1950	17W
SQ45/2200	2200	21W



Wall mount angled bulkhead developed with LED at the forefront of its design, combining high performance, strength and durability. Body in zinc coated steel.

3mm opal polycarbonate diffuser secured by anti-tamper fixings.

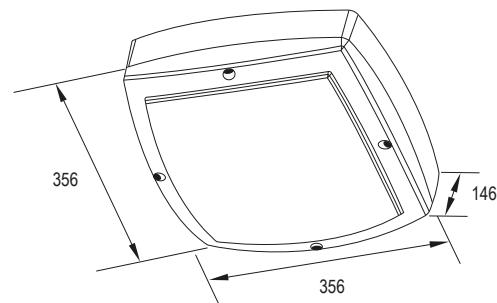
1420, 1950 and 2200lm are supplied set to ordered level but version for on-site switchable output is available - add suffix "ADJ".

CCT:	4000K
Finish:	Painted Textured Black
IP:	65
IK:	14

TAVOS

Square LED Architectural bulkhead

PRODUCT CODE	LUMENS	LOAD
TAVO/1420	1420	11.5W
TAVO/1950	1950	17W
TAVO/2200	2200	21W
For "A" Grille version change TAVO/ to TAVOA/		
For "Hood" version change TAVO/ to TAVOH/		



Square architectural bulkhead with aesthetics and LED performance at the forefront of its design. Great lines, high performance, strength and durability make Tapos the perfect choice. Die cast aluminium body & frame finished matt black. 3mm opal injection moulded polycarbonate diffuser secured by anti-tamper fixings. Also available with aluminium grille or hood. 1420, 1950 and 2200lm are supplied set to ordered level but version for on-site switchable output is available - add suffix "ADJ".

CCT:	4000K
Finish:	Painted Matt Black
IP:	65
IK:	18



TAVOS 'A' GRILLE



TAVOS HOOD

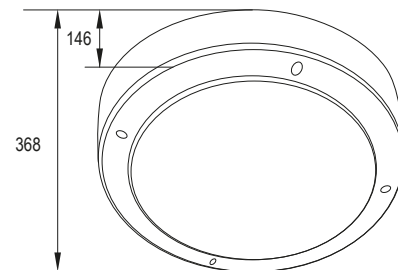
COVELLO

Circular LED Architectural bulkhead

PRODUCT CODE	LUMENS	LOAD
COV/1420	1420	11.5W
COV/1950	1950	17W
COV/2200	2200	21W

For "A" Grille version change COV/ to COVA/

For "Hood" version change COV/ to COVH/



Circular architectural bulkhead with aesthetics and LED performance at the forefront of its design. Great lines, high performance, strength and durability make Covello the perfect choice. Die cast aluminium body & frame finished matt black.

3mm opal injection moulded polycarbonate diffuser secured by anti-tamper fixings. Also available with aluminium grille or hood. 1420, 1950 and 2200lm are supplied set to ordered level but version for on-site switchable output is available - add suffix "ADJ".

CCT:	4000K
Finish:	Painted Matt Black
IP:	65
IK:	18



COVELLO 'A' GRILLE



COVELLO HOOD

Other colours and technical modifications available, see page 22 for details.

KALIX

Strong circular LED fitting

PRODUCT CODE	LUMENS	LOAD
KAL/1420	1420	11.5W
KAL/1950	1950	17W
KAL/2200	2200	21W
KAL/3000	3000	27W



Round bulkhead developed with LED at the forefront of its design.

Steel spun body and diffuser frame. Rear fixing holes.

3mm opal polycarbonate diffuser secured by anti-tamper fixings.

Anti-ligature version also available.

1420, 1950 and 2200lm are supplied set to ordered level but version for on-site switchable output is available - add suffix "ADJ".

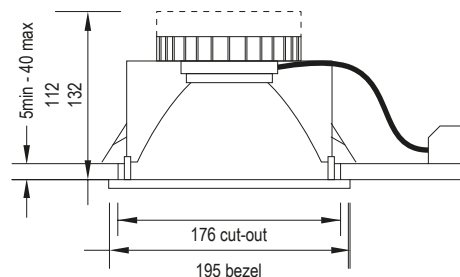
CCT:	4000K
Finish:	Painted RAL9010
IP:	65
IK:	20



ARCOLA

Circular LED downlighter

PRODUCT CODE	LUMENS	LOAD
ARC/1150	1150	10W
ARC/1975	1975	17W
ARC/2900	2900	26W



Steel body and highly specular reflector
3mm opal polycarbonate panel housed within a die cast aluminium bezel secured by anti-tamper fixings.
Supplied with 500mm supply lead
Clear panel available— add suffix /CPP
Anti-Ligature version available—add suffix /AL

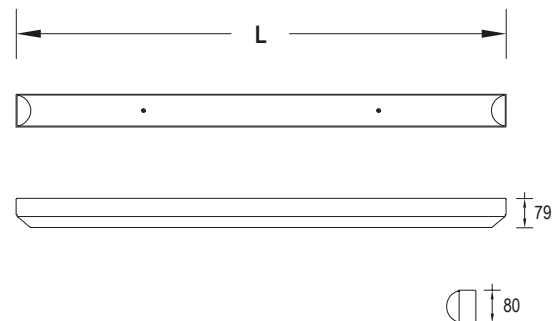
CCT:	4000k
Finish:	Painted Smooth White
IP:	65
IK:	16



FORUM

Strong & Slim LED luminaire

PRODUCT CODE	LUMENS	LENGTH (L)	LOAD
FOR/4/4500	4500	1200mm	35W
FOR/4/4900	4900	1200mm	39W
FOR/4/5800	5800	1200mm	48W



Linear LED fitting with a contemporary design; slim, efficient & strong.

Body in zinc coated steel.

3mm opal polycarbonate diffuser secured by anti-tamper fixings.

4500, 4900 & 5800lm are supplied set to ordered level but version for on-site switchable output is available - add suffix "ADJ".

CCT:	4000K
Finish:	Painted Textured Black
IP:	65
IK:	14

FORUM45

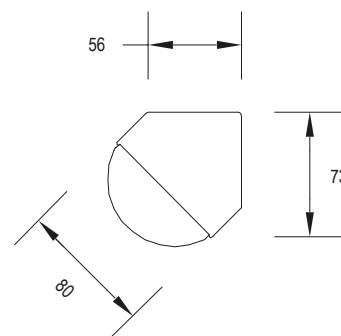
Strong & slim angled LED luminaire

PRODUCT CODE	LUMENS	LENGTH (L)	LOAD
--------------	--------	------------	------

FOR45/4/4500	4500	1200mm	35W
--------------	------	--------	-----

FOR45/4/4900	4900	1200mm	39W
--------------	------	--------	-----

FOR45/4/5800	5800	1200mm	48W
--------------	------	--------	-----



Angled linear LED fitting with a contemporary design; slim, efficient & strong.

Body in zinc coated steel.

3mm opal polycarbonate diffuser secured by anti-tamper fixings.

4500, 4900 & 5800lm are supplied set to ordered level but version for on-site switchable output is available - add suffix "ADJ".

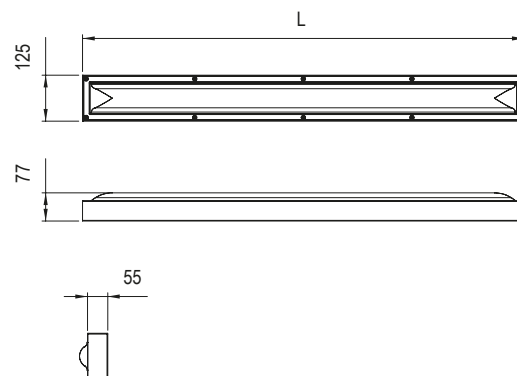
CCT:	4000K
Finish:	Painted Textured Black
IP:	65
IK:	14

Other colours and technical modifications available, see page 22 for details.

TABOR

Strong & durable LED linear luminaire

PRODUCT CODE	LUMENS	LENGTH (L)	LOAD
TAB/2/2250	2250	620mm	18W
TAB/2/2450	2450	620mm	20.5W
TAB/2/2900	2900	620mm	25W
TAB/4/4500	4500	1200mm	35W
TAB/4/4900	4900	1200mm	39W
TAB/4/5800	5800	1200mm	48W



Super-slim 'tough brother' of the Forum, designed for installations where severe or prolonged attack may occur.

Body in zinc coated steel.

3mm opal polycarbonate diffuser secured by anti-tamper fixings.

620mm version is provided utilising a flat opal polycarbonate panel.

2250, 2450 & 2900lm are supplied set to ordered level but version for on-site switchable output is available – add suffix “ADJ”.

4500, 4900 & 5800lm are supplied set to ordered level but version for on-site switchable output is available - add suffix “ADJ”.

CCT:	4000K
Finish:	Painted Textured Black
IP:	65
IK:	18

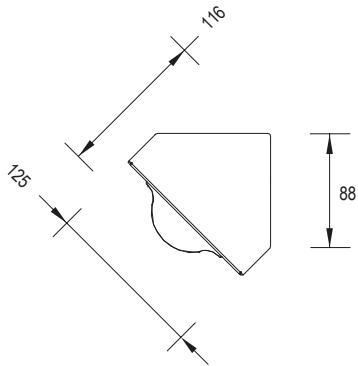


Other colours and technical modifications available, see page 22 for details.
Anti-ligature as standard when ceiling mounted.

TABOR45

Strong & durable LED angled luminaire

PRODUCT CODE	LUMENS	LENGTH (L)	LOAD
TAB45/2/2250	2250	620mm	18W
TAB45/2/2450	2450	620mm	20.5W
TAB45/2/2900	2900	620mm	25W
TAB45/4/4500	4500	1200mm	35W
TAB45/4/4900	4900	1200mm	39W
TAB45/4/5800	5800	1200mm	48W



The 'tough brother' of the Forum, designed for installations where severe or prolonged attack may occur.
Angled body in zinc coated steel.

3mm opal polycarbonate diffuser secured by anti-tamper fixings.

620mm version is provided utilising a flat opal polycarbonate panel.

2250, 2450 & 2900lm are supplied set to ordered level but version for on-site switchable output is available – add suffix “ADJ”.
4500, 4900 & 5800lm are supplied set to ordered level but version for on-site switchable output is available - add suffix “ADJ”.

CCT:	4000K
Finish:	Painted Textured Black
IP:	65
IK:	18

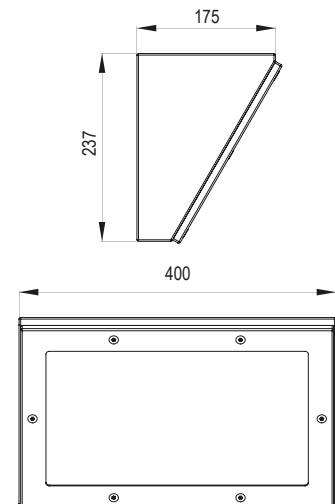


Other colours and technical modifications available, see page 22 for details.
Anti-ligature as standard when correctly cornice mounted.

TABOR COMPACT

Strong & durable LED angled luminaire

PRODUCT CODE	LUMENS	LOAD
TAC60/4000	4000	32W
TAC60/6000	6000	48W



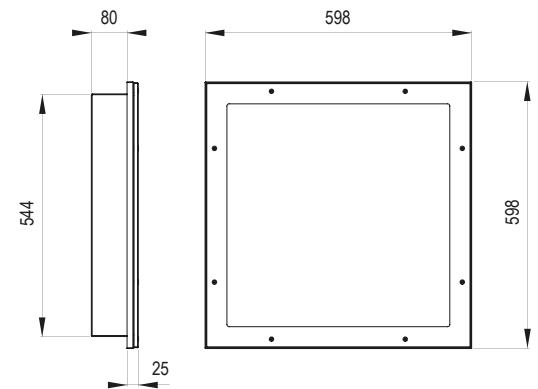
Designed for installations where severe or prolonged attack may occur.
400mm compact 60/30 degree angled body manufactured from zinc coated steel.
3mm opal polycarbonate flat panel secured by anti-tamper fixings.

CCT:	4000K
Finish:	Painted Textured Black
IP:	65
IK:	18

TABOR SQUARE

Strong durable LED recessed luminaire

PRODUCT CODE	LUMENS	LOAD
TAS/6500	6500	49W
TAS/8000	8000	60W



Square recessed body manufactured from zinc coated steel with upstand recess.
Mounting through body sides to ceiling frame or through rear of body dependent on ceiling type.
3mm clear patterned polycarbonate flat panel secured by anti-tamper fixings.

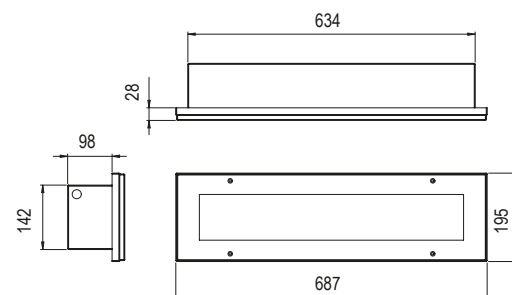
CCT:	4000K
Finish:	Painted Textured Black
IP:	65 from below
IK:	16

Other colours and technical modifications available, see page 22 for details.

VARBERG

Strong & durable LED recessed luminaire

PRODUCT CODE	LUMENS	LENGTH (L)	LOAD
VAR/2/2250/4000	2250	687 (634)	18W
VAR/2/2450/4000	2450	687 (634)	20.5W
VAR/2/4500/4000	4500	687 (634)	35W
VAR/2/4900/4000	4900	687 (634)	39W



Recessed linear LED fitting, unique upstand recessing flange, suitable for new installations or retrofitting into existing cavities when Bergo, Bergen or Victor have been removed.
body in Zinc coated steel.

3mm clear patterned polycarbonate flat panel diffuser secured by anti-tamper fixings.

2250 & 2450 lm are supplied set to ordered level but version for on-site switchable output is available – add suffix “ADJ”.

4500 & 4900 lm are supplied set to ordered level but version for on-site switchable output is available – add suffix “ADJ”.

CCT:	4000K
Finish:	Painted Textured Black
IP:	65
IK:	18

STEALTH

Slimline wall pack

PRODUCT CODE

LUMENS

LOAD

STL/3000

3000

22W

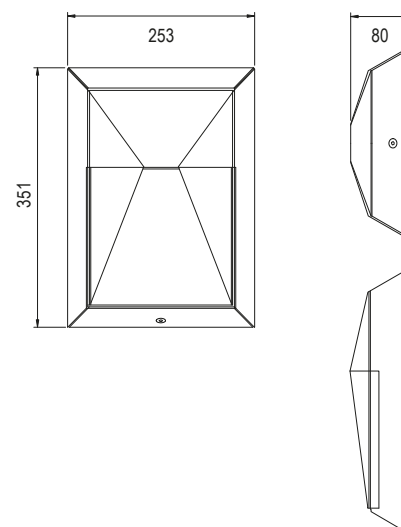
STL/4000

4000

27W



Slim wall mounted vandal and weather resistant LED fitting.
Body in zinc coated steel
3mm opal polycarbonate diffuser.
Secured by anti-tamper fixing.



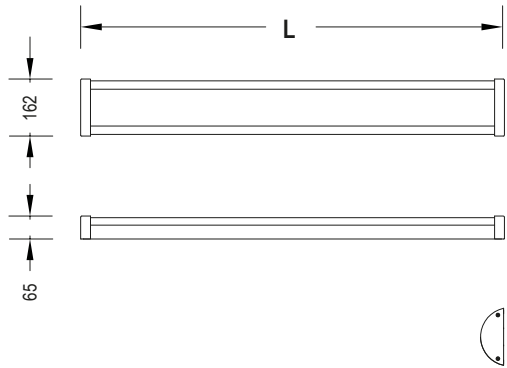
CCT: 4000K
Finish: Painted Textured Black
IP: 65
IK: 14

Other colours and technical modifications available, see page 22 for details.

CITADEL

Slim-line curved profile LED luminaire

PRODUCT CODE	LUMENS	LENGTH (L)	LOAD
CIT/2/2250	2250	600mm	18W
CIT/2/2450	2450	600mm	20.5W
CIT/2/2900	2900	600mm	25W
CIT/4/4500	4500	1200mm	35W
CIT/4/4900	4900	1200mm	39W
CIT/4/5800	5800	1200mm	48W



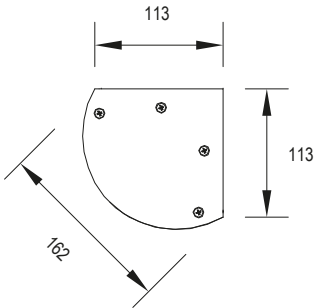
Linear LED fitting with a slim-line curved profile capable of continuous mounting (available with optional cable trunking system).
Body in extruded aluminium.
Machined aluminium end caps secured by anti-tamper fixings.
3mm opal polycarbonate control lens designed to achieve superior optical performance.
2250, 2450 & 2900lm are supplied set to ordered level but version for on-site switchable output is available – add suffix “ADJ”.
4500, 4900 & 5800lm are supplied set to ordered level but version for on-site switchable output is available - add suffix “ADJ”.

CCT:	4000K
Finish:	Painted Smooth White
IP:	65
IK:	18

CITADEL45

Angled curved profile LED luminaire

PRODUCT CODE	LUMENS	LENGTH (L)	LOAD
CIT45/2/2250	2250	600mm	18W
CIT45/2/2450	2450	600mm	20.5W
CIT45/2/2900	2900	600mm	25W
CIT45/4/4500	4500	1200mm	35W
CIT45/4/4900	4900	1200mm	39W
CIT45/4/5800	5800	1200mm	48W



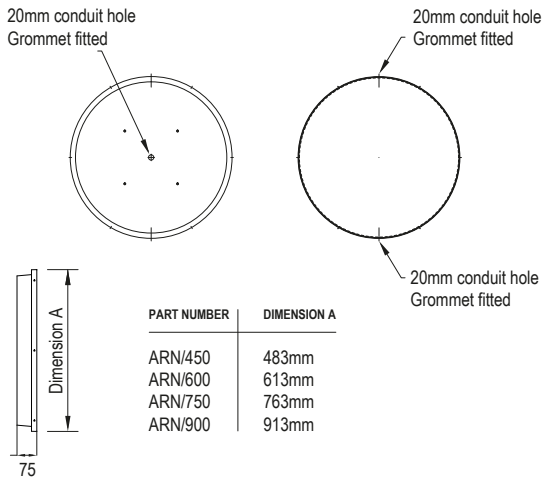
Angled LED fitting with a slim-line curved profile capable of continuous mounting (cable runs can be housed within angled back body).
Body in extruded aluminium, mounted on zinc coated steel angled bracket.
Machined aluminium end caps secured by anti-tamper fixings.
3mm opal polycarbonate control lens designed to achieve superior optical performance.
2250, 2450 & 2900lm are supplied set to ordered level but version for on-site switchable output is available – add suffix “ADJ”.
4500, 4900 & 5800lm are supplied set to ordered level but version for on-site switchable output is available – add suffix “ADJ”.

CCT:	4000K
Finish:	Painted Smooth White
IP:	65
IK:	18

ARENA

Gymnasium and general area LED luminaire

PRODUCT CODE	LUMENS	LENGTH (L)	LOAD
ARN/450/3000	3000	450mm	27W
ARN/600/6000	6000	600mm	45W
ARN/600/8000	8000	600mm	60W
ARN/750/8000	8000	750mm	60W
ARN/750/10000	10000	750mm	76W
ARN/900/12000	12000	900mm	86W



Designed for installation in gymnasia / sports halls to protect against damage from ball games or accidental impact.
 LED's offering high light output and maintenance free running, (tuneable white available as an option in 600mm – 900mm diameter products).
 Strong Circular aluminium spun body.
 3mm clear polycarbonate diffuser with LED liner or Opal LED.
 Available as 450mm, 600mm, 750mm & 900mm versions.

CCT:	4000K
Finish:	Painted Textured White
IP:	65
IK:	14

Retro-fit Replacement LED Gear Trays

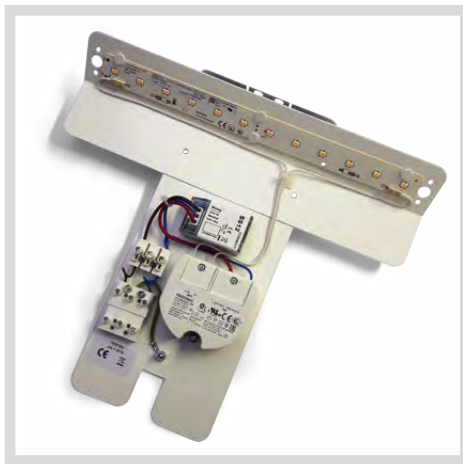
Thinking of replacing gear trays in existing fittings with efficient LED versions? Then come to us! We are able to produce new high quality LED gear trays for all makes & manufacturers in any quantity from 1 to 100,000.

What's more they are all made in our UK based factory just North of the M25. Whatever fittings you have, we'll have the gear tray to fit.

And when we say we cover all manufacturers we really do mean ALL, such as Philips, Coughtrie, Simmons, Holophane, Urbis, Windsor, Designplan, Thorn to name but a few...

Oh and we also offer replacement glazing frames as well.

For more information please refer to our RETRO-FIT range brochure or the RETRO-FIT section of our website www.aetherlighting.com/retro-fit.php



Modification options

All of our fittings can be modified to suit your project specific needs. The table below shows the most common modifications available. This list is not exhaustive so if you have a particular need, and it is not listed below, then please contact us.

DESCRIPTION	Add suffix	SQ	SQ45	TAVOS	COVELLO	KALIX	ARCOLA	FORUM	FORUM45	TABOR	TABOR45
SEMI-RECESSED	/SR	•						•		•	
3 HOUR EMERGENCY	/EM3	•	•	•	•	•		•	•	•	•
CORRIDOR OPERATION	/COR	•	•	•	•	•		•	•	•	•
DALI DIMMING	/DALI	•	•	•	•	•	•	•	•	•	•
I-10V DIMMING	/10VD	•	•	•	•	•	•	•	•	•	•
CCT: 3000K	/3000	•	•	•	•	•	•	•	•	•	•
PHOTOCELL	/PEC	•	•	•	•	•		•	•	•	•
SEPARATE CIRCUITS	/SEC							•	•	•	•
NIGHT LIGHT	/NIL	•	•	•	•	•		•	•	•	•
MICROWAVE SENSOR	/MIW	•	•	•	•	•	REMOTE	•	•	•	•
SKI-SLOPE BODY	/MWB	•	•					•	•	•	•
STAINLESS STEEL	/SS	•	•					•	•	•	•
CABLE TRUNKING SYSTEM	/CMS									•†	•†
ANTI-LIGATURE VERSION	/AL					•	•			STD**	STD**
PAINTED TEXTURED WHITE (RAL 9016)*	/WW	•	•	•	•	•	•	•	•	•	•
END CONDUIT ENTRY	/ECE	•	•	•	•			•	•	•	•
SWITCH DIM	/SWD	•	•	•	•	•	•	•	•	•	•

†Increases overall depth of fitting.
*Other colours available upon request.
**Anti-ligature as standard when ceiling mounted

DESCRIPTION	Add suffix	TABOR COMPACT	TABOR SQUARE	VARBERG	STEALTH	CITADEL	CITADEL45	ARENA
SEMI-RECESSED	/SR		STD**	STD**				
3 HOUR EMERGENCY	/EM3	•	•	•	•	•	•	•
CORRIDOR OPERATION	/COR	•	•	•		•	•	•
DALI DIMMING	/DALI	•	•	•	•	•	•	•
I-10V DIMMING	/10VD	•	•	•	•	•	•	•
CCT: 3000K	/3000	•	•	•	•	•	•	•
PHOTOCELL	/PEC	•			•	•	•	•
SEPARATE CIRCUITS	/SEC	•	•	•	•	•	•	
NIGHT LIGHT	/NIL	•	•	•		•	•	•
MICROWAVE SENSOR	/MIW	•	•	•	•	•	•	•
SKI-SLOPE BODY	/MWB	•						
STAINLESS STEEL	/SS	•	•	•	•			
CABLETRUNKING SYSTEM	/CMS	• +				• +	• +	
ANTI-LIGATURE VERSION	/AL	STD**		•				
PAINTED TEXTURED WHITE (RAL 9016)*	/W	•	•	•	•			•
END CONDUIT ENTRY	/ECE	•		•		•	•	
SWITCH DIM	/SWD	•	•	•		•	•	•

+Increases overall depth of fitting.

*Other colours available upon request.

**Anti-ligature as standard when ceiling mounted



T: 020 8254 0094 | E: SALES@AETHERLIGHTING.COM
A: 5 KIMPTON ROAD, KIMPTON INDUSTRIAL PARK, SUTTON, SURREY SM3 9QL

www.aetherlighting.com